

REALISTIC

Service Manual

SA-2001
STEREO AMPLIFIER
 Catalog Number 31-1962



CUSTOM MANUFACTURED FOR RADIO SHACK  A DIVISION OF TANDY CORPORATION

CONTENTS

1. SPECIFICATIONS	3
2. BLOCK DIAGRAM	4
3. DISASSEMBLY INSTRUCTIONS	5
4. ADJUSTMENT PROCEDURE	5
5. ADJUSTMENT & CHECK POINTS	5
6. TROUBLESHOOTING	5
7. LEVEL DIAGRAM	7-10
8. 8007 PNE AMP BOARD	11
9. 8088 MAIN AMP BOARD 	12
10. TUNE TAP RESONANCE BOARD	13 & 14
11. TUNE SPEAKER SWITCH BOARD	15
12. TUNE METER RANGE SWITCH BOARD	15
13. 8007 POWER SUPPLY BOARD	17
14. 8007 PHONE CONTROL BOARD	17
15. SEMICONDUCTOR LEAD IDENTIFICATION	18
16. ELECTRICAL PARTS LIST	20-24
17. MISCELLANEOUS PARTS LIST	25 & 26
18. SCHEMATIC DIAGRAM	SEPARATE SHEET
19. EXPLODED VIEW	SEPARATE SHEET

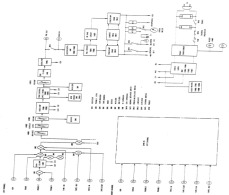
SPECIFICATIONS

	NOMINAL	LIMIT	UNIT
1. RMS OUTPUT POWER As 0.2% THD for 20,000 Hz into 8 ohms (at 60dB gain, 100% modulation)	50	50	W
2. IM DISTORTION (at 50 W, 60% mod, 500 Hz)	0.03	0.3	%
3. HARMONIC DISTORTION (at 50 W)	0.02	0.1	%
	20 Hz	0.1	%
	1 kHz	0.1	%
	20 kHz	0.05	%
4. FREQUENCY RESPONSE (Aux at 1 W, 8 ohms)			
	20-20,000		Hz
	±1.5 dB		
5. INPUT SENSITIVITY (for 55 W, PHONO 1)	5	5±1.5	mV
	100	2±0.5	mV
	LOW	1.5±0.3	mV
	2	2±0.5	mV
	PHONO 2	2±0.5	mV
6. INPUT IMPEDANCE	200	200±30	Ω
	200		Ω
	200		Ω
	200		Ω
	200		Ω
7. PHONO EQUALIZATION	RIAA±1	RIAA±1.5	dB
8. PHONO AMP OVERLOAD CAPABILITY (at 1% distortion)	150	150	mV
9. TONE CONTROL			
BASS			
	±4	±4±1.5	dB
	±13	±12±2	dB
	±4	±4±2	dB
TREBLE			
	±6	±6±1.5	dB
	±4	±4±2	dB
	±8	±8±2	dB
10. HIGH FILTER	50 kHz	-60	dB
11. LOW FILTER	1 kHz	-42	dB
	50 Hz	-8	dB
12. LOUDNESS COMPENSATION			
	50 Hz	+10	dB
	100 Hz	+7	dB
13. CHANNEL SEPARATION (AUX input, 100-10,000 Hz, 20 volts output at 8 ohm load)	50	45	dB
14. SIGNAL TO NOISE RATIO (input matched)			
	PHONO 1		
	HIGH	70	dB
	MID	65	dB
	LOW	60	dB
	PHONO 2		
	TUNER/AUX/TAPE	65	dB
	150	60	dB
	75	60	dB
15. TAPE OUTPUT LEVEL (at PHONO input 3 mV)	200	200±30	mV
16. RESIDUAL NOISE (at minimum volume)	0.5	1.5	mV
17. LOAD IMPEDANCE		4-16	ohms
18. POWER SOURCE (120 volts, 60 Hz ¹)			
	30 watts, no signal		
	100 watts, full signal (8 ohms, both channels 50 watts)		

¹ IEC 60085, Vol. 50 for European and Australian Models.

NOTE: Nominal Specs represent the design specs; all units should be able to approximate these—some will exceed and some may drop slightly below these specs. Limit Specs represent the absolute worst condition which still might be considered acceptable; in no case should a unit perform to less than within any Limit Spec.

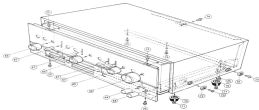
BLOCK DIAGRAM



Vertical text on the right margin, possibly a page number or reference code.

DISASSEMBLY INSTRUCTIONS

1. **Removing Glass from wooden cabinet**
 - a) Remove the five screws (R72 & R74) from sides and back.
2. **Removing the front panel**
 - a) Remove the knobs from BASS, TREBLE, TAPE MONITOR, SELECTOR, VOLUME, PERFECT LEVEL, BALANCE and both turn-over switches (CONTROLS).
 - b) Remove four screws (R25) from top and bottom of front panel then remove the front panel.
3. **Removing the bottom plate**
 - a) Remove four plastic foot's screws (R71) and three screws (R26) from the bottom.



ADJUSTMENT PROCEDURE

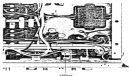
MAIN AMPLIFIER

INDICATOR	ADJUSTMENT	REMARKS
DC Voltmeter	V _{RF} 2.5 V _{DC} 0.5	Adjust for 2.500 ± 0.014 with across 4000 Ω, 0.5 Ω, 50 Ω with no signal
POWER METER	V _{RF} 2.5 11 KILBER	Adjust for 1 watt reading on Power Meter with average output of 2.82 v _{rms} into 1 meg. 8 ohm load. Tube Controls should be in center or O/T position.

ADJUSTMENT & CHECK POINTS



(TOP VIEW)



(BOTTOM VIEW)

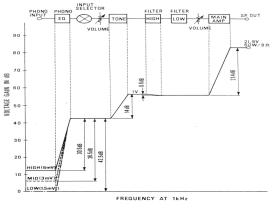
TROUBLESHOOTING

Symptom	Cause and Remedy
1) Amplifier not operative; pilot lamp (below the WATTS meter) does not light.	<p>A) Faulty AC power cord Replace the cord.</p> <p>B) Defect in power switch SW10 Replace the switch.</p> <p>C) Blown power fuse Replace the fuse.</p> <p>D) Defective thermal switch Replace the thermal switch.</p>
2) Fuse blows when power is turned ON.	<p>A) Power transformer T800 defective Replace the transformer.</p> <p>B) Short in the primary or secondary of the transformer (T800) Repair the short.</p> <p>C) Damaged rectifier 00S1 Replace the rectifier.</p> <p>D) Short circuit in the power supply circuit Repair the short.</p> <p>E) Short circuit in the power transistor TR812a, b or TR812c, d Replace the defective transistor and check circuit.</p>
3) Pilot lamp lights but no sound from both channels.	<p>A) Resistor R511, R512, R934, R935 or R936 damaged (open) Replace the damaged resistor.</p> <p>B) Rectifier 00S1 damaged (open) Replace the rectifier.</p> <p>C) Open in secondary winding of the power transformer T800 Replace the transformer.</p>
4) A speakers do not work.	<p>A) Speaker switch SW13 defective Replace the switch.</p>
5) B speakers do not work.	<p>B) Speaker switch SW14 defective Replace the switch.</p>
6) Both A and B speakers do not work.	<p>A) Relay RL801 defective Replace the relay.</p> <p>B) When DC Voltage is read on output tap it will occur off of Main Amp Board 80001, the relay RL801 will automatically cut off the output. If so, the Main Amp circuit or power supply circuit is defective. Locate and correct the defect.</p>

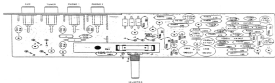
Symptom	Cause and Remedy
7) One channel does not work with VOLUME at maximum with a test signal applied to the center terminal of VOLUME control of the same channel.	<p>A) Defect in transistor TR501-TR510 of Main Amp Board 5008 Locate and correct the defect.</p> <p>B) Defect in transistor TR501-TR508 of Tone Control Board 5007 Replace the defective transistor(s).</p> <p>C) Short in speaker output terminal Repair speaker.</p> <p>D) Defective resistors R501-R503, R504-R506, R507-R509, R510-R512, R513, R514, R515, R516, R517, R518, R519, R520, R521, R522, R523, R524 Replace the defective resistor(s).</p>
8) Same as 7 above but channel operates when test signal is applied to 7.	<p>A) Defective SELECTOR switch SW1 or TAPES MONITOR switch SW2 Repair or replace the defective switch(es).</p> <p>B) Faulty resistor R503, R505, R511, R512 Replace the faulty resistor(s).</p> <p>C) Defective VOLUME control VR500 or the PERFECT LEVEL control VR502 Replace the defective one(s).</p> <p>D) Poor contact in AUX or TUNER input jacks Repair or replace jacks.</p>
9) Same as 8 above but PHONO does not operate.	<p>A) Poor contact in PHONO jacks Repair or replace jacks.</p> <p>B) IC IC501 (PLA1487) defective Replace the IC.</p> <p>C) Resistor R502, R503, R504, R506, R508 Replace the defective resistor(s).</p>
10) Same as 8 above but TUNER or AUX do not operate.	<p>A) Poor contact in input jacks Repair or replace the jacks.</p> <p>B) Defective SELECTOR switch SW1 Repair or replace the switch.</p>
11) Speaker works normally but headphones do not operate.	<p>A) Headphones plug does not mate with jack Repair the plug.</p> <p>B) Defective resistor R756a, b Replace the resistor(s).</p>
12) TAPES OUT not operative	<p>A) Poor contact in TAPES OUT jack Repair or replace the jack.</p> <p>B) Defective resistor R701 or R702 (common) Replace the defective resistor(s).</p> <p>C) Defective TAPES DUBBING switch Replace the switch.</p>
13) PERFECT LOUDNESS has no effect.	<p>A) Defective DISPLAY switch SW5 Replace the switch.</p> <p>B) Defective capacitor C616a, b Replace the capacitor.</p> <p>C) Defective VOLUME control VR500a-d Replace.</p>

Symptom	Cause and Remedy
140 STEREO-MONO not effective	A) Defective MONO switch SW5 Replace the switch.
150 TAPE MONITOR not effective	A) Defective TAPE MONITOR switch SW5 Replace the switch. B) Poor contact in TAPE in jacks Repair or replace jacks.
160 BASS control has no effect.	A) VFR06 defective Replace the variable resistor. B) Defective CB07 CB10 of Tone Control Board 9007. Replace the defective component(s). C) Defective turn-over switch SW10 Replace the switch.
171 TREBLE control has no effect.	A) VFR04 defective Replace the variable resistor. B) Defective capacitor C805, C806 of Tone Control Board 9007 Replace the defective capacitor(s). C) Defective turn-over switch SW9 Replace the switch.
180 Excessive noise with PHONO input	A) Faulty IC801 Replace the IC. B) Defective resistor R601, R606, R608, R609 or capacitor C801, C802, C808-C807 Replace the defective component(s).
181 SUB-FIL. not effective	A) Defective SUB-FIL. switch SW6 Replace the switch. B) Resistor R806 or capacitor CB16, CB17 defective Replace the defective component(s).
200 HI-FIL. not effective	A) Defective HI-FIL. switch SW7 Replace the switch. B) Capacitor CB18 or resistor R823 defective Replace the defective component(s).
211 Noisy VOLUME control	A) Defective VOLUME control VFR03-a or BQ406. B) Defective capacitor C806 (PHONO input) or C801 Replace the defective capacitor(s).
221 WATTS Meter(s) not functioning	A) WATTS Meter(s) defective Replace the meter(s). B) Defective diode CRD1a, b Replace the defective diode(s). C) Resistor R781, R782, R784 defective Replace the defective resistor(s).

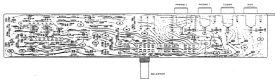
LEVEL DIAGRAM



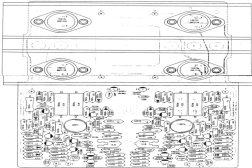
5037 PRE AMP BOARD (TOP VIEW)



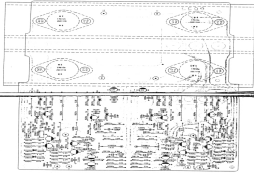
5037 PRE AMP BOARD (BOTTOM VIEW)



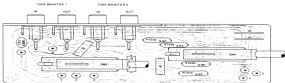
6055 MAIN AMP BOARD (TOP VIEW)



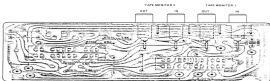
6065 MAIN AMP BOARD (BOTTOM VIEW)



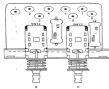
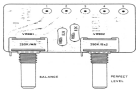
7165 TAPE SWITCH BOARD (TOP VIEW)



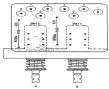
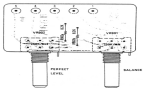
7165 TAPE SWITCH BOARD (BOTTOM VIEW)



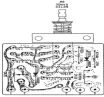
7166 SPEAKER SWITCH BOARD (TOP VIEW)



7166 SPEAKER SWITCH BOARD (BOTTOM VIEW)



41 8037 POWER SUPPLY BOARD (TOP VIEW)

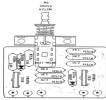


7167 METER RANGE SWITCH BOARD
(BOTTOM VIEW)

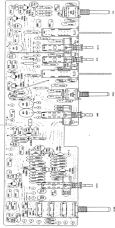
8037 POWER SUPPLY BOARD
(BOTTOM VIEW)



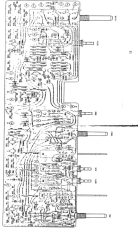
67 METER RANGE SWITCH BOARD (TOP



8037 TONE CONTROL BOARD (TOP VIEW)



8037 TONE CONTROL BOARD (BOTTOM VIEW)



SEMICONDUCTOR LEAD IDENTIFICATION



ELECTRICAL PARTS LIST

CAPACITORS				
Ref. No.	Value (F)	Voltage (V)	Tolerance (%)	Material
C801 a,b	4.7 μ	35	± 20	Electrolytic
C802 a,b	1000P	50	± 10	Ceramic
C803 a,b	47 μ	50	± 20	Electrolytic
C804 a,b	20P	50	± 10	Ceramic
C805 a,b	1000P	50	± 5	Polyester
C806 a,b	2000P	50	± 5	Polyester
C807 a,b	2.2 μ	50	± 20	Electrolytic
C808	10 μ	25	± 20	Electrolytic
C809	10 μ	25	± 20	Electrolytic
C810 a,b	1000P	50	± 20	Ceramic
C811	0.04 μ	25	± 20	Ceramic
C812	0.04 μ	25	± 20	Ceramic
C813	0.04 μ	25	± 20	Ceramic
C814	0.04 μ	25	± 20	Ceramic
C815	0.04 μ	25	± 20	Ceramic
C816 a,b	2.2 μ	50	± 20	Electrolytic
C817	Not Used			
C818 a,b	100P	50	± 10	Ceramic
C819 a,b	5 μ	5.0	± 20	Electrolytic
C820 a,b	25P	500	± 10	Ceramic
C821 a,b	250P	50	± 10	Ceramic
C822 a,b	1000P	50	± 10	Ceramic
C823 a,b	1000P	50	± 10	Ceramic
C824 a,b	270P	500	± 10	Ceramic
C825 a,b	1000P	50	± 10	Ceramic
C826 a,b	5.1 μ	50	± 10	Polyester
C827 a,b	1P	50	$\pm 5 \text{ PPF}$	Ceramic
C828 a,b	0.04 μ	25	± 20	Ceramic
C829 a,b	250P	50	± 10	Ceramic
C830 a,b	100P	500	± 10	Ceramic
C831 a,b	0.04 μ	25	± 20	Ceramic
C832 a,b	10P	500	± 10	Ceramic
C751	4700P	50	± 10	Ceramic
C752	0.04 μ	25	± 20	Ceramic
C801	4.7 μ	25	± 20	Electrolytic
C802	47 μ	25	± 20	Electrolytic
C803	25 μ	16	± 20	Electrolytic
C804	25 μ	16	± 20	Electrolytic
C805	2.2 μ	50	± 20	Electrolytic
C806	4.7 μ	50	± 20	Electrolytic
C851	1000 μ	50	± 20	Electrolytic
C852	1000 μ	50	± 20	Electrolytic
C853	0.01 μ	500	± 20	Ceramic
C854	0.01 μ	500	± 20	Ceramic
C855	0.01 μ	500	± 20	Ceramic
C856	0.01 μ	500	± 20	Ceramic
C857	0.01 μ	500	± 20	Ceramic
C858	0.01 μ	500	± 20	Ceramic
C859	0.01 μ	500	± 20	Ceramic
C860	0.01 μ	500	± 20	Ceramic
C861 a,b	1 μ	50	± 20	Electrolytic
C862 a,b	100P	50	± 10	Ceramic
C863 a,b	10P	50	± 10	Ceramic
C864 a,b	4.7 μ	25	± 20	Electrolytic
C865 a,b	2500P	50	± 5	Polyester
C866 a,b	1000P	50	± 5	Polyester
C867 a,b	0.047 μ	50	± 5	Polyester
C868 a,b	0.047 μ	50	± 5	Polyester
C869 a,b	0.1 μ	50	± 5	Polyester
C870 a,b	0.1 μ	50	± 5	Polyester
C871 a,b	1 μ	50	± 20	Electrolytic
C872 a,b	10P	50	± 10	Ceramic
C873 a,b	1 μ	50	± 20	Electrolytic
C874 a,b	0.01 μ	50	± 5	Polyester
C875 a,b	5000P	50	± 5	Polyester
C876 a,b	0.047 μ	50	± 5	Polyester
C877 a,b	0.047 μ	50	± 5	Polyester
C878 a,b	1 μ	50	± 20	Electrolytic
C879 a,b	2.2 μ	50	± 20	Electrolytic
C880 a,b	22 μ	10	± 20	Electrolytic
C881	10 μ	25	± 20	Electrolytic
C882	10 μ	25	± 20	Electrolytic
C883	10 μ	25	± 20	Electrolytic

COIL & TRANSFORMERS

Ref. No.	Description	R/S Part No.	M/S Part No.
LR01 a,b	Power Cord 1.5M	00-2485	05199007
T881	Power Transformer (UL)	TA-0080	30000074
T881	Power Transformer (UL)		30000080
T881	Power Transformer (UL)		30000080

OR COMPONENTS

Ref. No.	Description	R/S Part No.	M/S Part No.
CR851 a	Switch Knob (UL)	0-0820	40000000
CR851 b	Switch Knob (UL)		40000017

(Not used for European/Australian models)

DIGITS

Part No.	Type No.	R/S Part No.	M/S Part No.	Manufacturer
D881a,b	R 08 28	00-0408	30000087	NEC
D882a,b	182078K	00-0397	30001001	Haseki
D883a,b	182078K	00-0397	30001001	Haseki
D884a,b	182078K	00-0397	30001001	Haseki
D885a,b	182078A	00-0397	30001001	Haseki
D886a,b	182078A	00-0397	30001271	Haseki
D887a,b	182078A	00-0397	30001271	Haseki
D701a,b	1888P	00-0182	30000011	UNISON
D801	R0128	00-0403	30000080	NEC
D802	W030	00-0820	30000011	Haseki
D803	W030		30000011	Haseki
D804	W030		30000011	Haseki
D851	5576-20	00-0447	30000080	SHINDAI DENKI

METER

Ref. No.	Description	R/S Part No.	M/S Part No.
MR01 a,b	WATTS Meter	M-0080	00000000

INTEGRATED CIRCUIT

Ref. No.	Type No.	R/S Part No.	M/S Part No.	Manufacturer	Reference	
					Type No.	Manufacturer
IC821a,b	HA1457	MX-0023	00000000	ROHM		

LAMPS

Ref. No.	Description	R/S Part No.	M/S Part No.
PL1	5Y, 250VA, 0W WATTS Meter		07000010
PL2	5Y, 250VA, 0W WATTS Meter		07000010

P.C. BOARD ASSEMBLIES

Ref. No.	Description	R/S Part No.	M/S Part No.
6002	Pre-amp Board	X-7100	07000010
6003	Main Amp Board	X-7100	07000010
7100	Tone Board	X-1001	07710010
8001	Power Supply Board	X-1002	00000010
8002	Tone Amp Board	X-7003	00000010
7100	Lamp Board		07710010
7100	Speaker Switch Board	X-1004	07710010
7107	Meter Board	X-1005	07710010

RELAY

Ref. No.	Description	R/S Part No.	M/S Part No.
RL801	Relay UY4-24US-4BL	R-0012	07000010

Part. No.	Value (1st)	REG. Part No.	Message (2nd)	Value - Value (3rd)	Material
R020a,J	1K		1/4	05	Carbon
R021a,J	110K		1/4	05	Carbon
R022a,J	3.3K		1/4	05	Carbon
R023a,J	100K		1/4	05	Carbon
R024	100		1/4	05	Carbon
R025	100		1/4	05	Carbon
R026	100		1/4	05	Carbon
R027a,J	1K		1/4	05	Carbon

SWITCHES

Part. No.	Description	REG. Part No.	REG.'s Part No.
SW1	SELECTOR	0-0000	27100100
SW2	PHONE LEVEL	0-0001	27000012
SW3	TAPER BEARING	0-0000	27000010
SW4	TAPER BEARING	0-0000	27000010
SW5	MONO	0-0004	27000107
SW6	DEFEAT	0-0004	27000107
SW7,J	0-1, 0-0, P-1	0-0000	27000100
SW8	TRIPLE (unmarked)	0-0004	27000000
SW9	0-0, 0-0, 0-0	0-0000	27000000
SW10	0-0, 0-0, 0-0, 0-0, 0-0	0-0000	27000000
SW11	0-0, 0-0, 0-0, 0-0, 0-0	0-0000	27000100
SW12	0-0, 0-0, 0-0, 0-0, 0-0	0-0000	27000100
SW13, 14	SPECIAL 0-0, 0-0	0-0000	27000100
SW15	TERMINAL, PROTECT- TO R 100°C	0-0001	20700000
SW16	POWER (1st)	0-0000	27000111
SW18	POWER (2nd)		27000000
SW19	POWER (3rd) Annotated		27000110

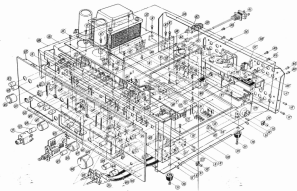
TRANSISTORS						
Ref. No.	Type No.	R/C Part No.	Part No.	Manufacturer	Equivalent	
					Type No.	Manufacturer
TR801a,b	2SC2880 (BL)		2SC21401	Tooshiki	2SC21412	Motorola
TR802a,b	2SC2880 (BL)		2SC21401	Tooshiki	2SC21412	Motorola
TR803a,b	2SC2880 (BL)		2SC21401	Tooshiki	2SC21412	Motorola
TR804a,b	2SA940 (BL)		2SC00822	Tooshiki	2A728	Motorola
TR805a,b	2SC2880		2SC21401	Tooshiki	2SC21412	Motorola
TR806a,b	2SA1017		2SC00822	Tooshiki	2A728	Motorola
TR807a,b	2SA940		2SC00822	Tooshiki	2A728	Motorola
TR808a,b	2SC2880		2SC21401	Tooshiki	2SC21412	Motorola
TR809a,b	2SA728		2SC00822	Tooshiki	2A728	Motorola
TR810a,b	2SC2880		2SC21401	Tooshiki	2SC21412	Motorola
TR811a,b	2SC2880		2SC21401	Tooshiki	2SC21412	Motorola
TR812a,b	2SA728 (T, O)		2SC00822	Tooshiki	2A728	Motorola
TR813a,b	2SA728 (T, O)		2SC00822	Tooshiki	2A728	Motorola
TR801	2SC00822		2SC00822	Tooshiki	2A728	Motorola
TR802	2SA940		2SC00822	Tooshiki	2A728	Motorola
TR803	2SA728		2SC00822	Tooshiki	2A728	Motorola
TR804	2SC2880		2SC21401	Tooshiki	2SC21412	Motorola
TR805	2SC2880		2SC21401	Tooshiki	2SC21412	Motorola
TR806	2SA940		2SC00822	Tooshiki	2A728	Motorola
TR807	2SC2880		2SC21401	Tooshiki	2SC21412	Motorola
TR808	2SC2880		2SC21401	Tooshiki	2SC21412	Motorola
TR809a,b	2SC2880 (BL)		2SC21401	Tooshiki	2SC21412	Motorola
TR810a,b	2SA728 (T, O)		2SC00822	Tooshiki	2A728	Motorola
TR811a,b	2SC2880 (BL)		2SC21401	Tooshiki	2SC21412	Motorola
TR812a,b	2SA940 (BL)		2SC00822	Tooshiki	2A728	Motorola
TR813a,b	2SC2880 (BL)		2SC21401	Tooshiki	2SC21412	Motorola

VARIABLE RESISTORS			
Ref. No.	Description	R/C Part No.	Mfg. Part No.
V8001a,b	Slide Control 1 K Ω /B	P-0288	28188189
V8001a,b	Motor Adjust 2 K Ω /B	P-0288	28112280
V8001a,b	BALANCE Control 250 K Ω /B	P-0082	28080183
V8001a,b	PERFECT LEVEL 250 K Ω /B	P-3088	28080186
V8001a,b	VOLUME Control 250 K Ω /B	P-1884	28080184
V8004a,b	TREBLE Control 100 K Ω /B	P-4022	28080188
V8005a,b	BASS Control 100 K Ω /B	P-4822	28080149

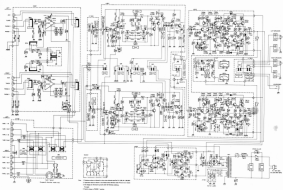
MISCELLANEOUS PARTS LIST

	Description	QTY	MFG Part No.	MFG Part No.
A	RF Mount Jack			33882088
	Wire Wrap Pin 18 mm			18844087
	Jump Wire			62882087
	UL Tube 1 x 8			11581188
	Fiber Insulator			18888088
	Heat Sink		44-0288	18888088
	Transformer Pressure Fit Mount		188-1887	83200088
	Binding Head Screw Type B M3x8			88888088
	Pin Head Screw M2x12			88888128
	Spring Washer M3.5			82788888
Hex Nut M3			41118888	
Wire Wrap Pin 18 mm			18843087	
RF Mount Jack (Tape)		J-8878	88881888	
Jump Wire			83888888	
Shield Plate			88878887	
Back Panel Assembly		Z-4144	11888888	
AC Outlet 1R-1R			38888887	
10P Switch Terminal		J-4488	82100288	
Insulator Padlock 21.5		P-1017	84882887	
Pushbutton M3 12.5L			88888887	
Headphone Jack		J-8878	38881188	
Mount Pin Mount		188-1888	83888887	
UL Tube 1 x 7.5			21887188	
Spring for Mount		H8-1888	84118887	
Binding Head Screw Type B M3x8			88888887	
Pin Head Screw M2x8			80888887	
Light Shield Fiber			72881887	
Pin Washer M4			82118887	
Spring Washer M4			83888887	
Hex Nut M4			81118878	
Spring Chassis		Z-4148	81188887	
Sub Chassis for Transformer		PH-3878	88888888	
Sub Chassis		Z-4138	88878887	
Wire Connector		4-8848	88878887	
Post Tube for Wire Grommet			81887438	
Extension Shaft		Z-4138	18888887	
Earth Lug			83488887	
Lock Washer M3			40888887	
Binding Head Screw Type B M3x8			88888117	
Transformer Type 101L1P		J-4488	81888888	
AC Cord 2000 Plug			88118888	
Cord Screen Filter 88-884			74888887	
Post AA 1888 10L1		887-8887	88877148	
Post AA 1288 12.5L1			88881188	
Flat Washer for Earth Terminal			42100888	
Shield Head M3			84888887	
Earth Terminal		888-8888	88877888	
Eye Shield Lug		H-3832	81888887	
Pin Head Screw M2.5x8 Blank			80888888	

	Description	Qty Part No.	Qty Part No.	
1 2 3 4 5 6 7 8 9 10 11 12 13 14 15 16 17 18 19 20 21 22 23 24 25 26 27 28 29 30	2P Pin Jack Spacer for PHONE-1 LEVEL	10878	33048840 84208801	
	(Switch)			
	2P, Type 1-8428		31881182	31821182
	2P, Type 1-8418		84210000	84210000
	Lock Ring		11870000	11870000
	SELECTION Switch For Motor	11870000		
	Pin Head Screw		41080000	41080000
	Flat Washer W/Flt		41080000	41080000
	Spring Head Screw W/Flt		41080000	41080000
	Bush			
	Front Chassis	2-4188		60080001 18080001
	Portable Search Cable			84210001
	Shaft Coupler		2-4188	18080001
	Front Motor Assembly		8-3828	28208001
	Feed Button		8-3828	28208001
	BALANCE PERFECT		8-3828	28208001
	LEVEL, Bush			
	Bush, TRIPLE SELECTOR		8-3828	28208001
	Knob			
	VOLUERE Knob		8-3828	28208001
	Lever Switch Knob		8-3828	28208001
	Wooden Cabinet		2-4127	84208000
	Bottom Plate		2-4147	84208001
	Plastic Feet		2-4147	84208001
	Pin Head Screw W/Flt			41080001
	Plastic Washer for Cabinet			84208001
	Pin Head Screw Type B 844x18			48040155
	Bush			
	Great Head Screw Type C			48000120
	Bush			
Spring Switch Lever for			27800007	
TAP				
Switchholder			28080001	
(Singapore/Australia)				
Plug 2A, 250V			28080001	
(Singapore/Australia)				
AC Cord with Plug			48010001	
(Singapore)				
AC Cord with Plug			48010001	
(Australia)				
Pin Jack				



SCHEMATIC DIAGRAM



REALISTIC®

RADIO SHACK  A DIVISION OF TANDY CORPORATION

U.S.A. - FORT WORTH, TEXAS 76102
CANADA - BARRE, ONTARIO L4M 4W5

TANDY CORPORATION

AUSTRALIA
250/215 SYDNEY ROAD
SYDNEY, N.S.W. 2110

EUROPE
TANDY INDUSTRIAL OF GERMANY
5110 BONNEN

U.S.
EILEEN BLAIR WASHINGTON
1007 WASHINGTON AVENUE, L.A.